



# FFP2

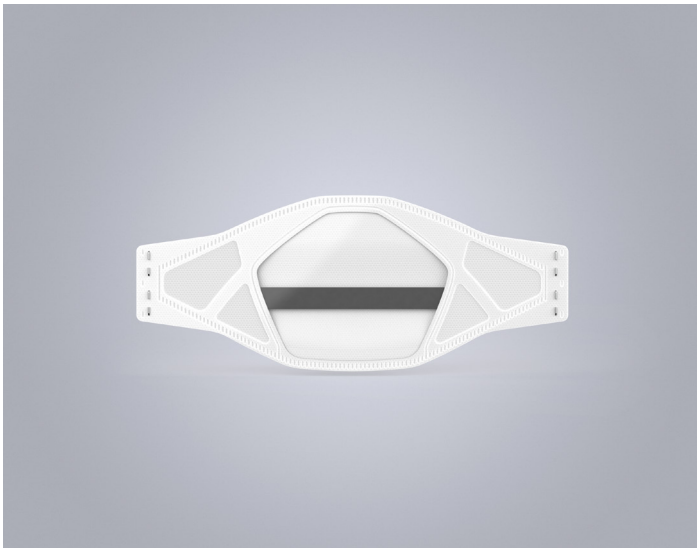
Atenschutzmaske Transparent  
Masque de protection respiratoire transparent  
Mascherina respiratoria trasparente  
Transparent respiratory protection mask  
Mascarilla de protección transparente  
**MaXsmile Pro 105109**



 Swiss Made

The present mask, MaXsmile Pro 105109, provides effective **protection of the airways against solid and liquid aerosols** in accordance with EN 149:2001+A1:2009.

## Technical data sheet



### Main characteristics

- Particle-filtering half mask of device class FFP2
- Penetration of the filter medium: max. 6%
- Verified, inwardly directed leakage
- The mask is designed to be worn during one shift (NR)
- Elastic head straps
- Foam padded nose clip for an optimal fit
- Flat design enabling space-saving storage
- Latex-free, hypoallergenic
- A clear window panel over the mouth allows lip-reading

### Review and conformity

The particle-filtering half mask meets the requirements of EN 149:2001+A1:2009 and the European Directive (EU) 2016/425. The type examination and the conformity assessment procedure were carried out with the participation of the following accredited testing and certification body: CCQS Certification Services Ltd., Block 1, Blanchardstown Corporate Park, Dublin 15 D15 FWP6

**CE 2834**

### Materials

The following materials are used for the manufacture of this product:

- Filter – polypropylene
- Rubber band – latex-free
- Nose clip – metal/polypropylene
- Foam nose – PU foam (polyurethane foam)
- Transparent window – CPP (cast polypropylene) foil

### Application

The selection of the most suitable personal protective equipment (PPE) depends on the respective situation and may only be carried out by qualified persons.

### Instructions for use

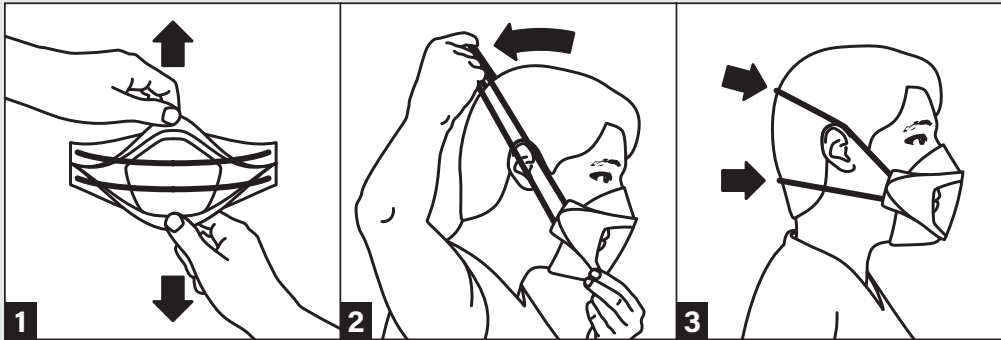
- The mask is intended for use during a single shift and must not be reused.
- The mask must not be used:
  - if wetted by breathing air
  - if damaged / heavily soiled or no longer sealing tightly

**MaXsmile Pro**

# Putting on and fitting



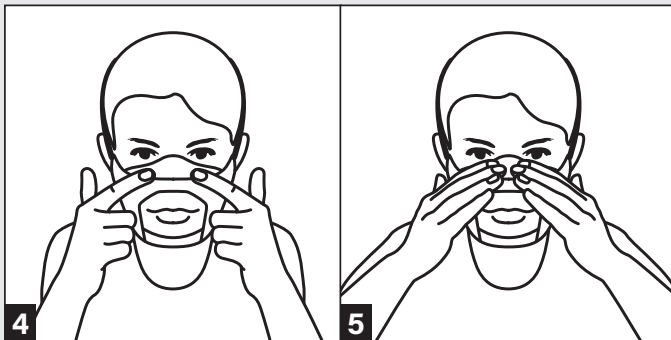
**Wash or disinfect hands before putting on mask.**



**1** Open the mask and take hold of the head straps

**2** Holding the mask on the outside with one hand, hold it to your nose, mouth and chin, press it gently against your face and slide both straps over your head with the other hand

**3** Pull the lower strap below the ears and the upper strap over the back of your head



**4** Press the nose clip down using both index fingers to shape it to your face. Eyeglasses wearer: put your glasses back on.

**5** Ensure the mask fits correctly and tightly. Breathe in sharply and adjust fit again if not sealing tightly.

## ! Precautions for use

- The mask must fit tightly and completely cover your mouth and nose.
- Presence of facial and/or beard hair below the sealing line may compromise the effectiveness of the mask.

## Removing and discarding the mask

1. Eyeglasses wearer: take off your glasses
2. Hold the straps with both hands, slide over your head and remove from your face with the mask
3. Take off the mask without touching the mask part and dispose of it in a closed waste container at the end of the shift at the latest
4. Clean hands
5. Eyeglasses wearer: put your glasses back on

## Packaging units

- Primary packaging: unprinted pouch containing 5 masks each
- Secondary packaging: cardboard folding box containing 20 masks
- Tertiary packaging: corrugated board box containing 9 folding boxes = 180 masks per corrugated board box (internal dimensions: 365 × 243 × 218 mm, external dimensions: 371 × 249 × 330 mm)
- Transport unit: 45 corrugated board boxes per pallet = 8,100 masks (9 boxes per layer, 5 layers per pallet, total height of the pallet 1.795 m)

## Storage and Transport

The product must be stored and transported in the original packaging. For further storage conditions and shelf life, see the manufacturer's information brochure.



## Contact

sales@flawaconsumer.com  
T +41 71 394 91 11